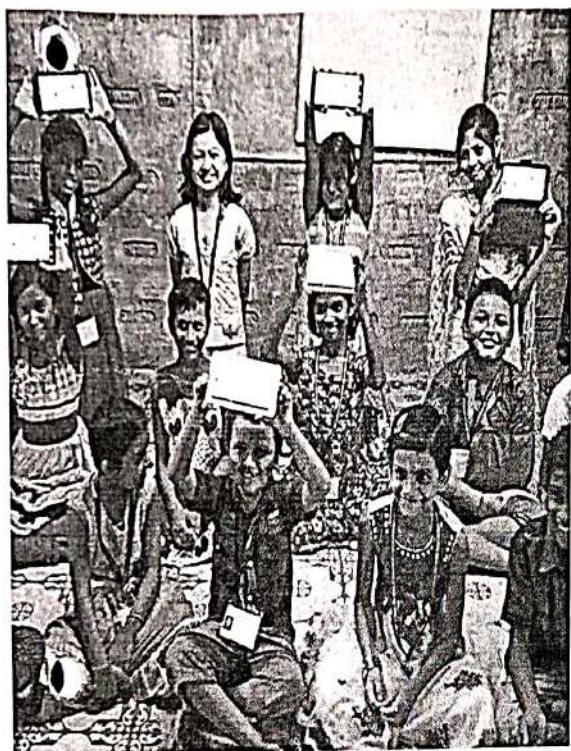
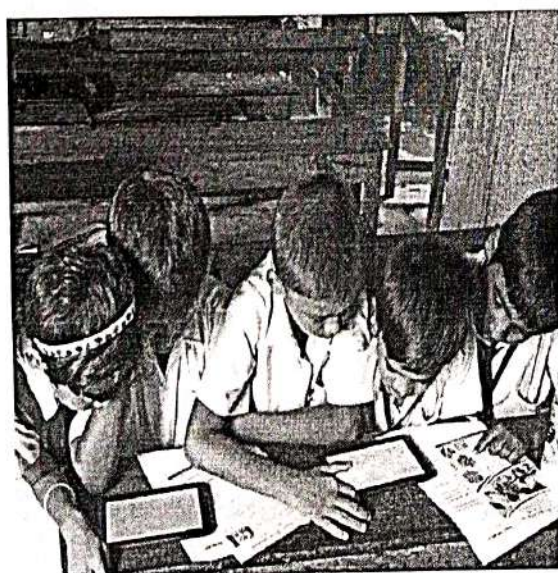


krishworks



HI-TECH ENGLISH CLASSES



ASER BASELINING REPORT FOR KARIMPUR GIRLS' HIGH SCHOOL

Overall Statistics

ASER

Status	Total	Percentage
Letter	163	40.0
Word	34	8.4
Early Para	45	11.1
Para	17	4.2
Early Story	56	13.8
Passed	92	22.6
Total Tested	407	

Interactions

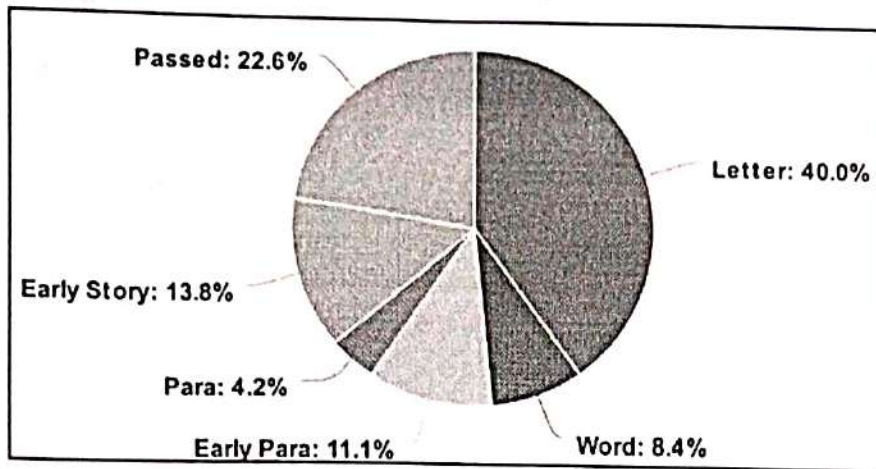
Score (max. 5)	Total	Percentage
0	165	45.21
1	78	21.37
2	44	12.05
3	33	9.04
4	18	4.93
5	27	7.40
Total Tested	365	

Comprehension

Status	Total	Percentage
Could Not Read	204	82.93
Could Read but Couldn't Understand	40	16.26
Read and Understood	2	0.81
Total Tested	246	

Overall Statistics

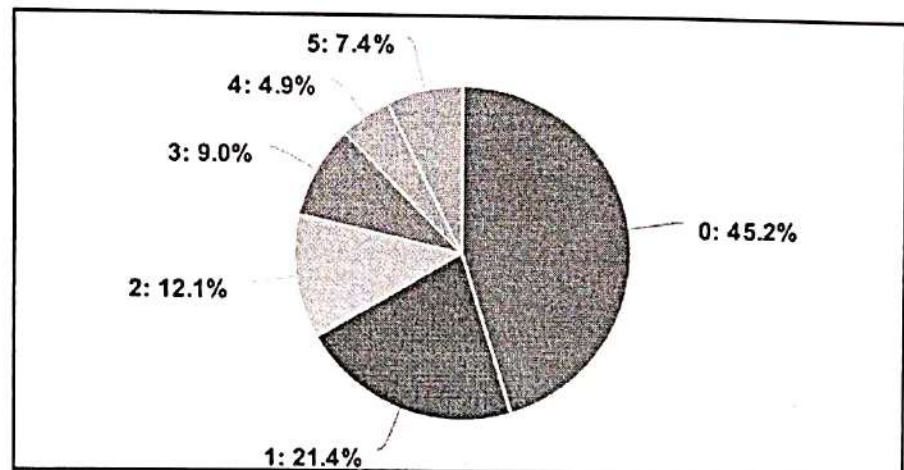
ASER (Overall)



Letter Word Early Para Para Early Story Passed

meta-chart.com

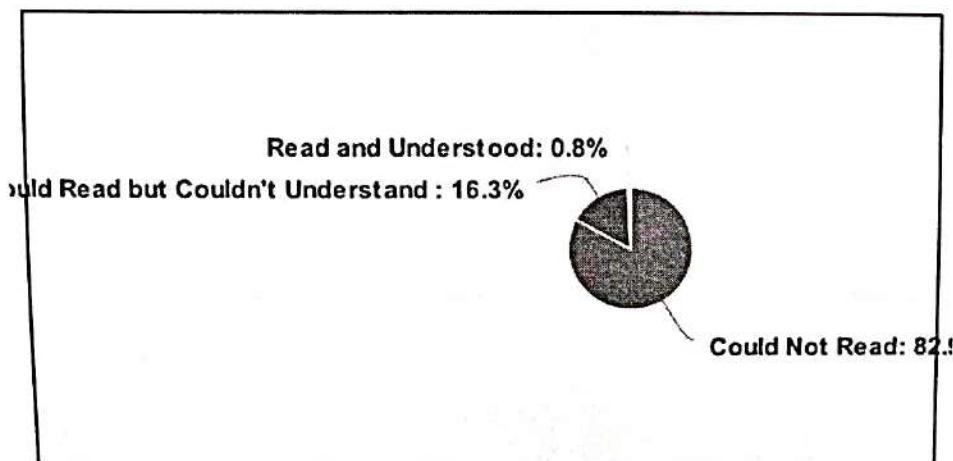
Interactions (Overall)



0 1 2 3 4 5

meta-chart.com

Comprehension (Overall)



Could Not Read Could Read but Couldn't Understand Read and Understood

meta-chart.com

Grade 5 Statistics

ASER

Status	Total	Percentage
Letter	75	34.6
Word	27	12.4
Early Para	26	12.0
Para	7	3.2
Early Story	35	16.1
Passed	47	21.7
Total Tested	217	

Interactions

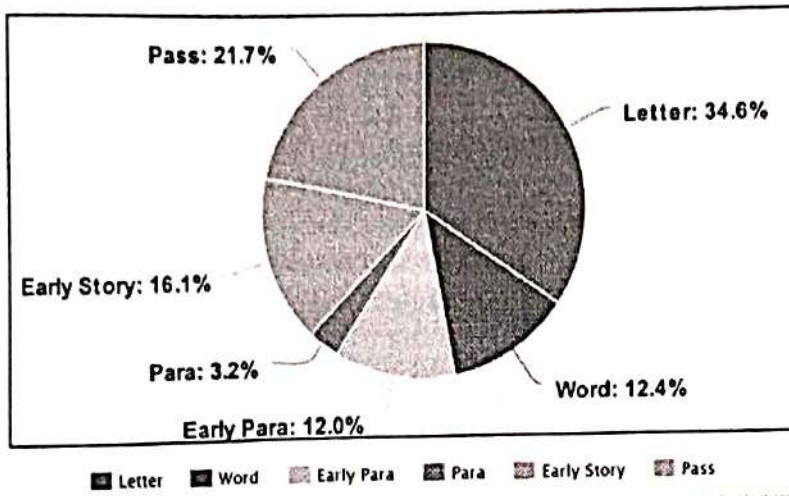
Score (max. 5)	Total	Percentage
0	80	43.2
1	40	21.6
2	21	11.4
3	20	10.8
4	9	4.9
5	15	8.1
Total Tested	185	

Comprehension

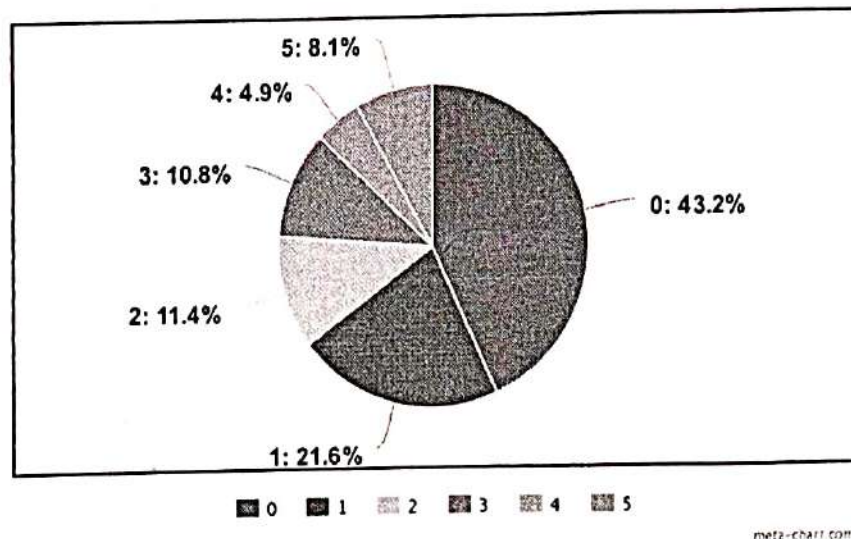
Status	Total	Percentage
Could Not Read	92	74.80
Could Read but Couldn't Understand	29	23.58
Read and Understood	2	1.63
Total Tested	123	

Grade 5 Statistics

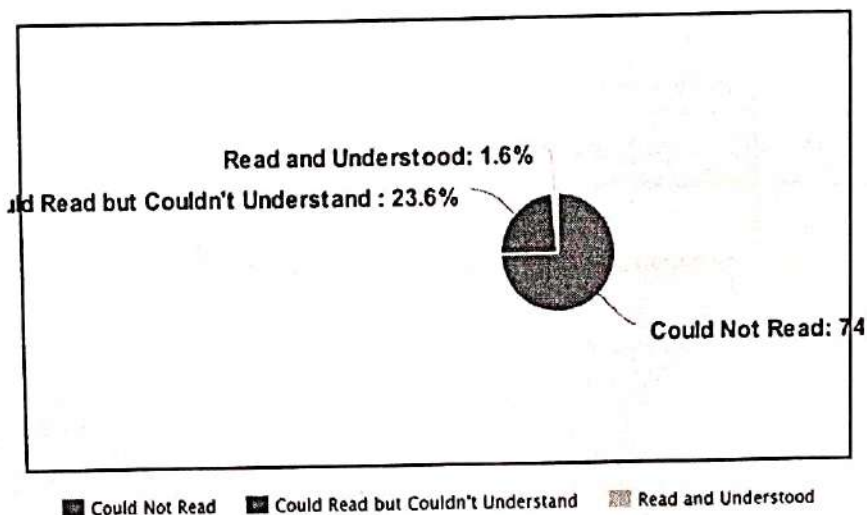
ASER (Class 5)



Interaction (Grade 5)



Comprehension (Grade 5)



Grade 6 Statistics

ASER

Status	Total	Percentage
Letter	88	46.3
Word	7	3.7
Early Para	19	10.0
Para	10	5.3
Early Story	21	11.1
Passed	45	23.7
Total Tested	190	

Interactions

Score (max. 5)	Total	Percentage
0	85	47.2
1	38	21.1
2	23	12.8
3	13	7.2
4	9	5.0
5	12	6.7
Total Tested	180	

Comprehension

Status	Total	Percentage
Could Not Read	112	91.06
Could Read but Couldn't Understand	11	8.94
Read and Understood	0	0.00
Total Tested	123	

ASER Test

We asked each child to do a series of tasks with increasing difficulty, one by one. The attempt here is to establish the highest level at which the child read comfortably. This is adapted from the survey used for the annual ASER report conducted by Pratham.

Letter	Student reads out 5 or more letters
Early Word	Student reads out less than 5 words, and cannot pronounce other words properly.
Word	Student reads out 5 or more words, and pronounces all words correctly.
Early Paragraph	Student reads some sentences but gets stuck at some sentences or words.
Paragraph	Student reads entire paragraph fluently without mistakes.
Early Story	Student is able to read the story but gets stuck at some places or made a few mistakes.
Pass	Student reads the story fluently, without mistakes. This student is at the 2nd Grade reading level.

ASER Test

Here's a sample task sheet which we have used at the school.

SAMPLE-1

ASER READING TEST SAMPLE

Letter

m t z
f k
i a r
v p

Ask child to read out all the letters given in the box. Child must get at least 5 letters correct.

Word

both step
cup rope
out dog
hat key

Ask child to read out all the words given in the box. Child must get at least 5 words correct.

Para

There is a big monkey.
He lives on a tree.
He likes to jump.
He also likes bananas.

Ask the child to read the paragraph given in the box. If child reads paragraph correctly, then move to story level.

Story

A big tree stood in a garden. It was alone and lonely. One day a bird came and sat on it. The bird held a seed in its beak. It dropped the seed near the tree. A small plant grew there. Soon there were many more trees. The big tree was happy.

Ask the child to read the story given in the box. Child must read this story fluently and without mistakes.

Ask the child to read this tool. Mark the child at the highest level he/she can reach.

ASER Test

We ask each student a series of 5 random questions, and note down the number of questions they were able to answer correctly.

Here are the list of questions we ask them (Any 5) -

- In which class do you study?
- In which school do you study?
- What is your country's name?
- How do you go to school?
- Where do you live?
- What is your ambition?
- What does your father do?
- What does your mother do?
- Where are you from?
- What is your hobby?
- How is the weather today?

Next Steps

We have divided each of the 5 sections into batches of 31 or 32 children, based on their ASER level. There are a total of 17 batches which have been formed from the 5 sections.

Each of the 17 batches will be using the lab for 1 class a week.